

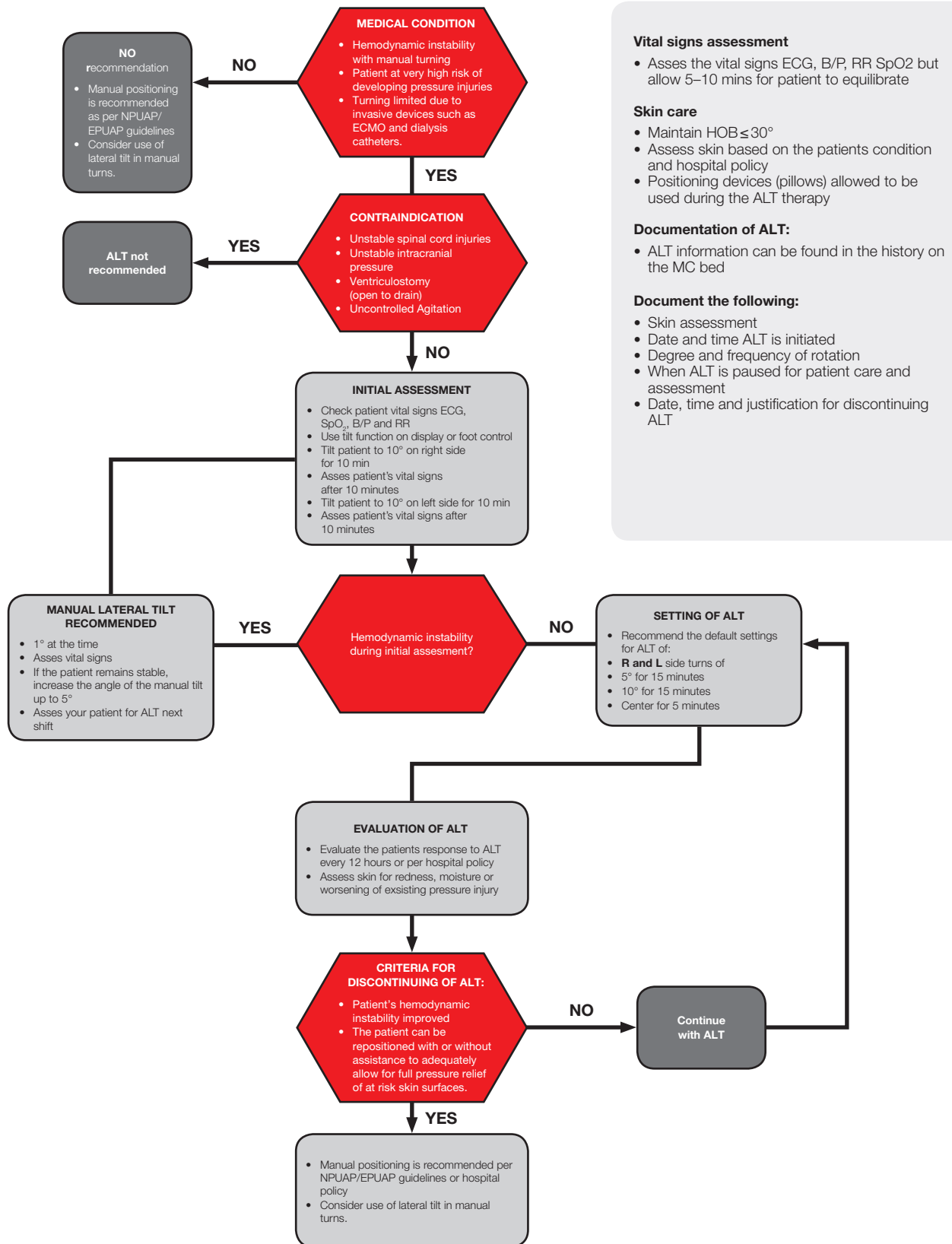


Automatic Lateral Therapy Algorithm



For pressure injuries prevention
and support of respiratory function

Automatic Lateral Therapy Algorithm for pressure injuries prevention



Vital signs assessment

- Asses the vital signs ECG, B/P, RR SpO₂ but allow 5–10 mins for patient to equilibrate

Skin care

- Maintain HOB ≤ 30°
- Assess skin based on the patients condition and hospital policy
- Positioning devices (pillows) allowed to be used during the ALT therapy

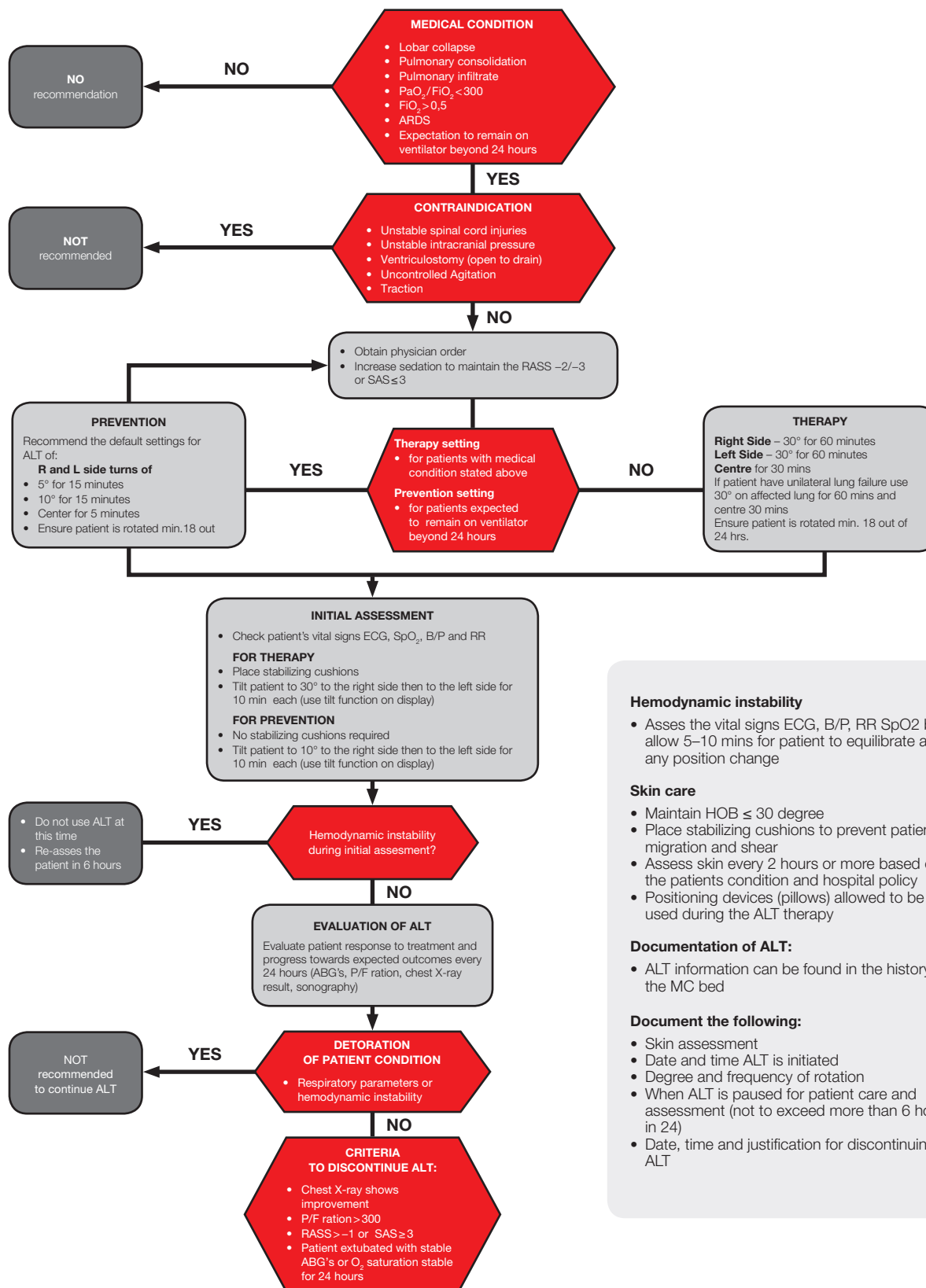
Documentation of ALT:

- ALT information can be found in the history on the MC bed

Document the following:

- Skin assessment
- Date and time ALT is initiated
- Degree and frequency of rotation
- When ALT is paused for patient care and assessment
- Date, time and justification for discontinuing ALT

Automatic Lateral Therapy Algorithm for support of respiratory function



Hemodynamic instability

- Asses the vital signs ECG, B/P, RR SpO₂ but allow 5–10 mins for patient to equilibrate after any position change

Skin care

- Maintain HOB ≤ 30 degree
- Place stabilizing cushions to prevent patient migration and shear
- Assess skin every 2 hours or more based on the patients condition and hospital policy
- Positioning devices (pillows) allowed to be used during the ALT therapy

Documentation of ALT:

- ALT information can be found in the history on the MC bed

Document the following:

- Skin assessment
- Date and time ALT is initiated
- Degree and frequency of rotation
- When ALT is paused for patient care and assessment (not to exceed more than 6 hours in 24)
- Date, time and justification for discontinuing ALT

Disclaimer:

* This algorithm has been developed by Michal Otáhal, MD, Head of ICU department from General Faculty Hospital in Prague, Clinic of Anesthesiology, Resuscitation and Intensive Care Medicine, using a multidisciplinary approach considering circumstances particular to specific patient population, services and structure, and clinical information. This is not intended to replace the judgment of physicians or other health care providers in the context of individual clinical circumstances to determine a patient's care.

■ ■ wissner-
■ ■ bosserhoff



Members of LINET Group

LINET spol. s r.o.

Želevčice 5 | 274 01 Slaný | Czech Republic

tel.: +420 312 576 400 | fax: +420 312 522 668 | e-mail: info@linet.com | www.linet.com

